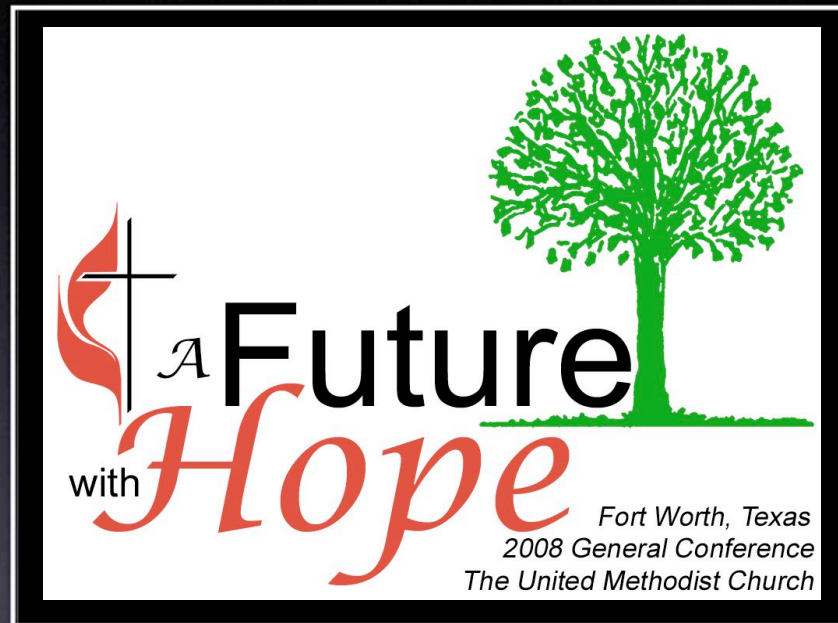
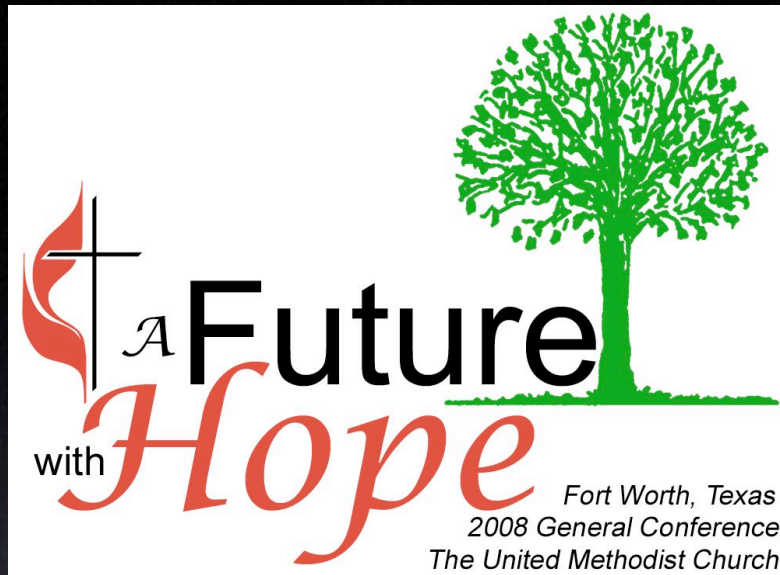


# *Worship & Music*



Marcia McFee, Worship Director  
Mark Miller, Music Director



# Thematic Structure

*For surely I know the plans I have for you, says the LORD, plans for your welfare and not for harm, to give you a future with hope.*

*Jeremiah 29:11*

# Opening: A Future With Hope

*[images for each day:  
morning worship and noon Eucharist]*

The Opening  
The Planting  
The Nurturing  
The Residing  
The Building  
The Bearing  
The Sustaining  
The Remembering  
The Releasing



Closing: A Future With Hope



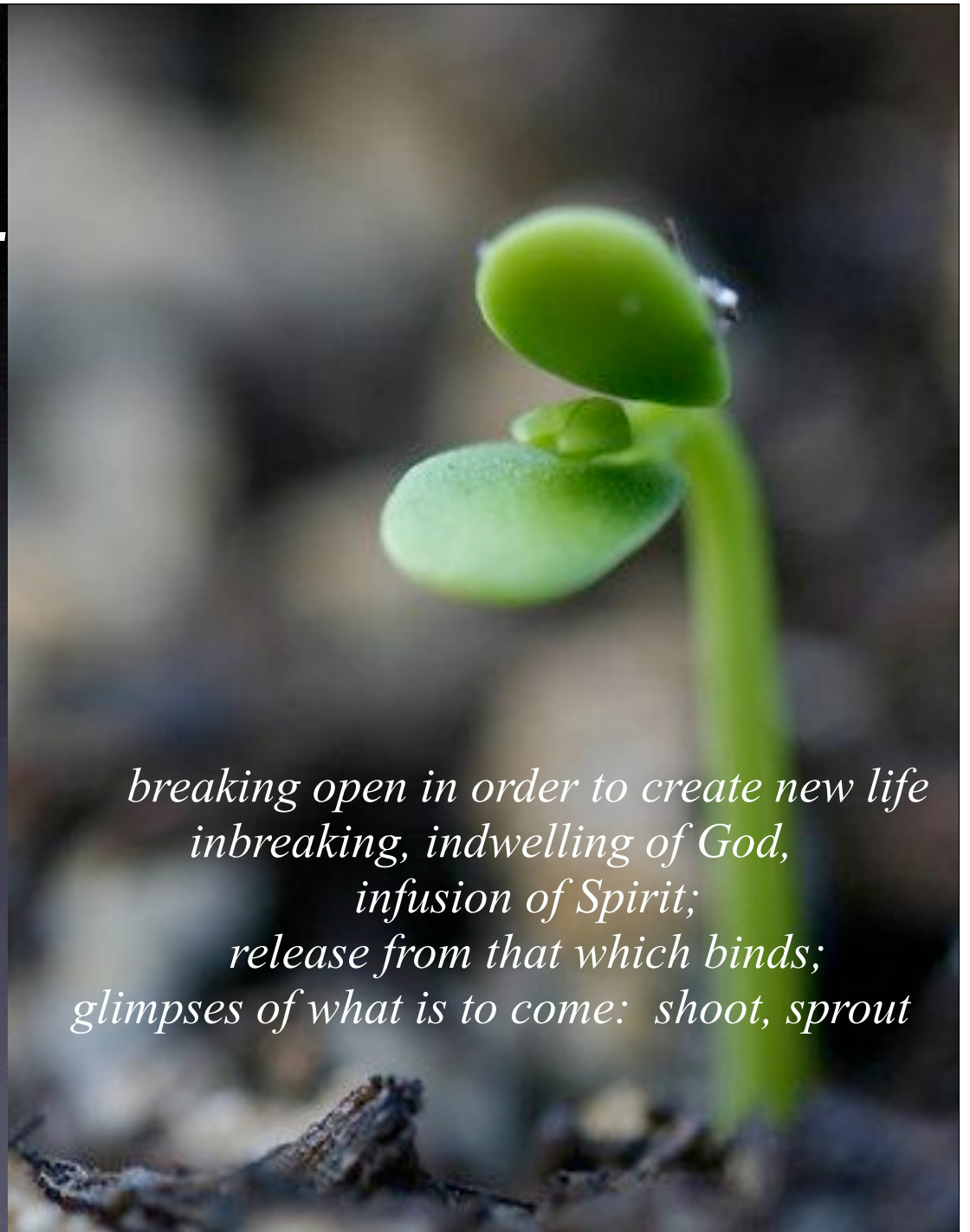




*Opening Worship:  
A Future with Hope*

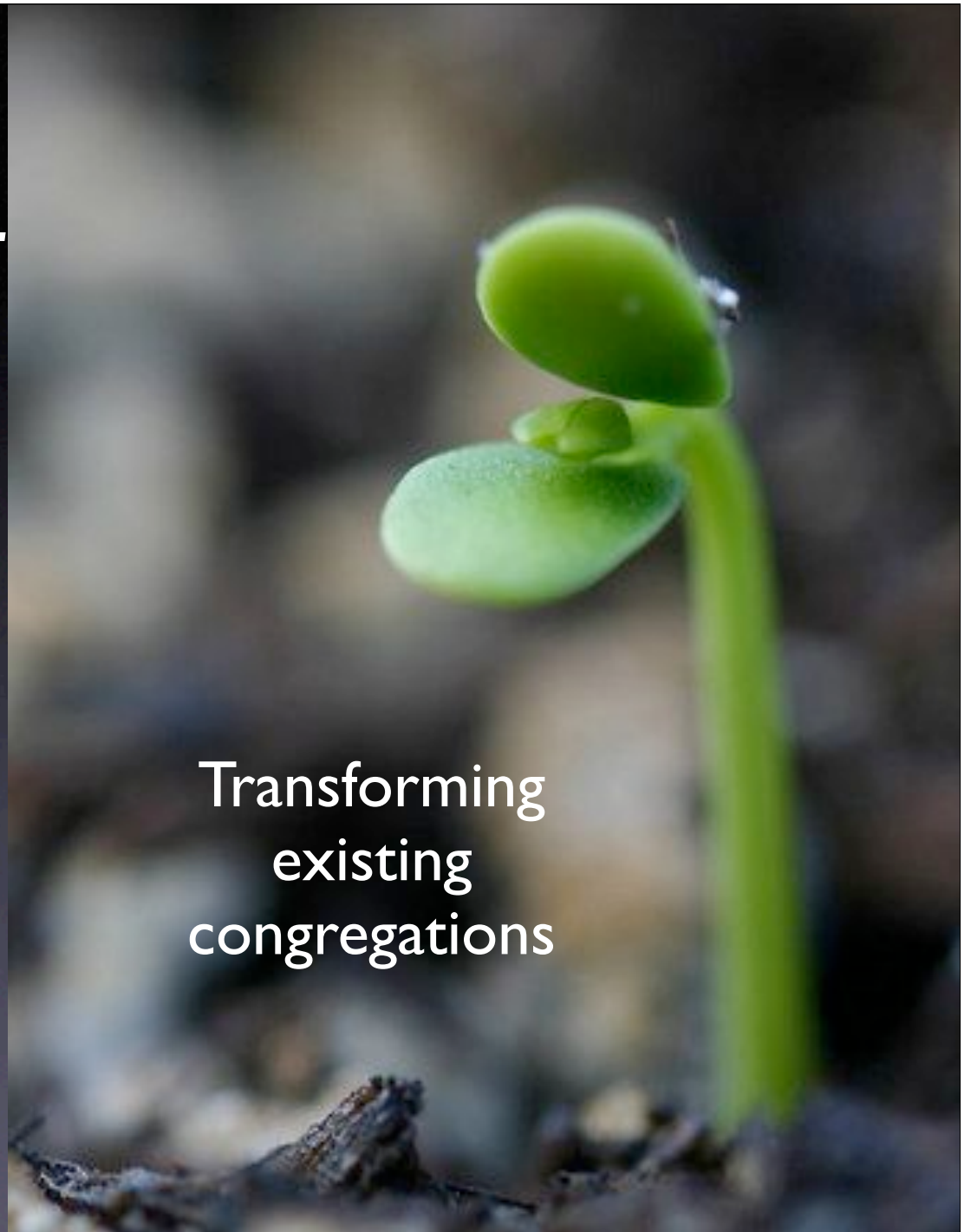


# *The Opening*



*breaking open in order to create new life  
inbreaking, indwelling of God,  
infusion of Spirit;  
release from that which binds;  
glimpses of what is to come: shoot, sprout*

# *The Opening*



Transforming  
existing  
congregations



# *The Planting*

*planting in fertile soil;  
imagining what will be;  
work of the people  
for the sake of those who will come;  
the long view*





# *The Planting*

Developing  
new  
congregations





# *The Nurturing*

A photograph of a stream flowing over moss-covered rocks. The water is clear and white with foam as it cascades over the dark, wet stones. The surrounding rocks are heavily covered in vibrant green moss, creating a lush, natural setting. The overall scene conveys a sense of freshness and vitality.

*To care for, water,  
giving what is needed;  
sustainability;  
spiritual disciplines;  
abundance of what we need;  
righteousness and justice -  
everflowing streams*





# *The Nurturing*

Strengthening  
clergy and lay  
leadership



# The Residing

*to "settle in" - oaks of Mamre;  
be fully where we are planted  
(even in the context of exile - Jeremiah);  
work of the people for the good of the whole  
to be vulnerable;  
opening to a  
deeper understanding of where  
we have pitched our tents*




# *The Residing*

Eliminating  
poverty in  
community  
with the poor



# *The Building*



*To strengthen, build up,  
make shelter;  
establish infrastructure  
for the long term;  
foundations, stability*



# *The Building*

**Teaching the  
Wesleyan  
model of  
reaching and  
forming  
disciples**



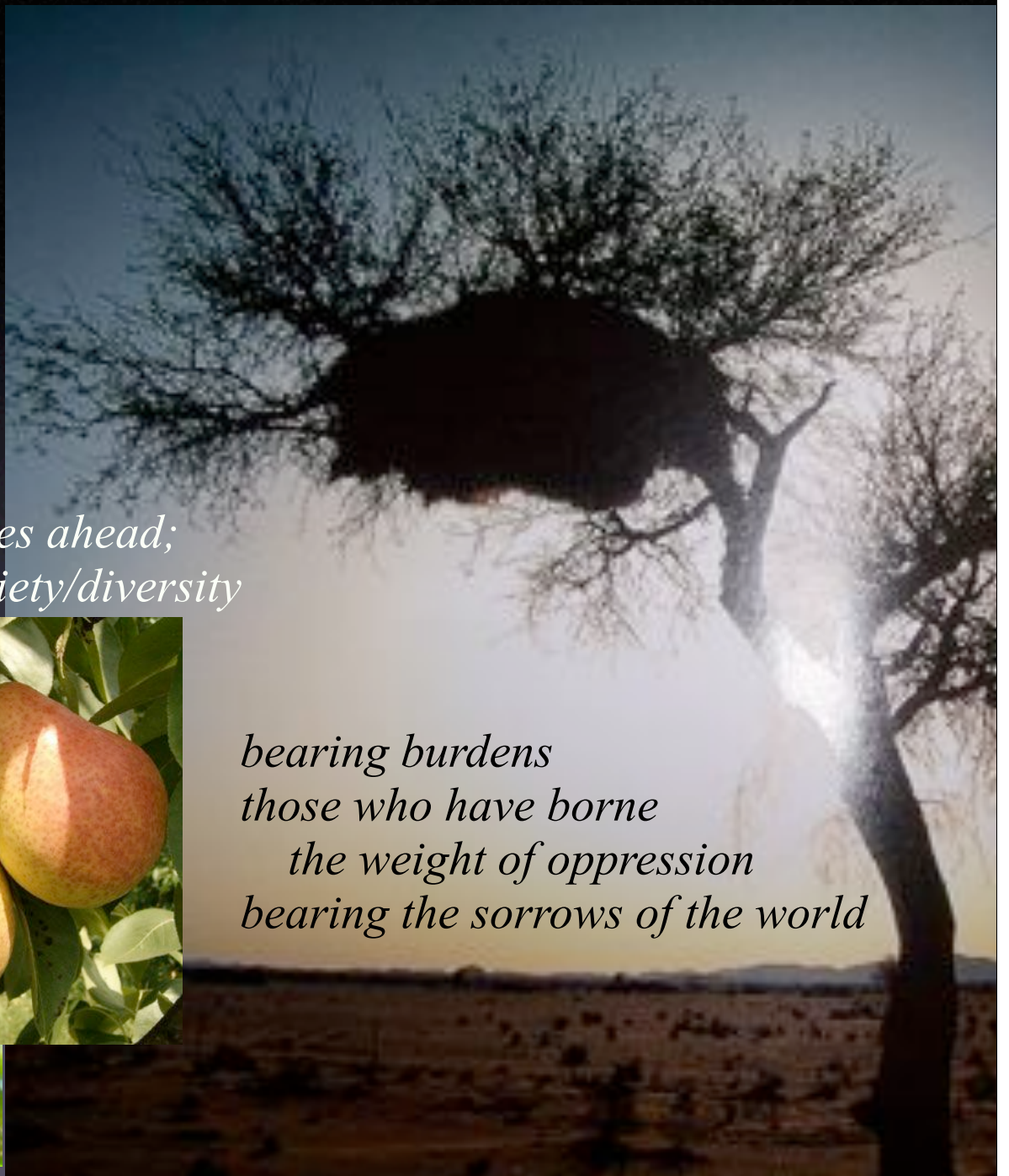


# The Bearing

*to hold, to carry, to bear;  
pregnant with possibilities;  
to bear fruit and flower;  
to endure for the joy that lies ahead;  
the shared goodness of variety/diversity*



*bearing burdens  
those who have borne  
the weight of oppression  
bearing the sorrows of the world*





# *The Bearing*



Expanding racial/  
ethnic ministries

*To offer habitat;  
reciprocity;  
interdependence;  
health and wholeness;  
continuous growth throughout all of life*



*The  
Sustaining*



Reaching and  
transforming the lives  
of children

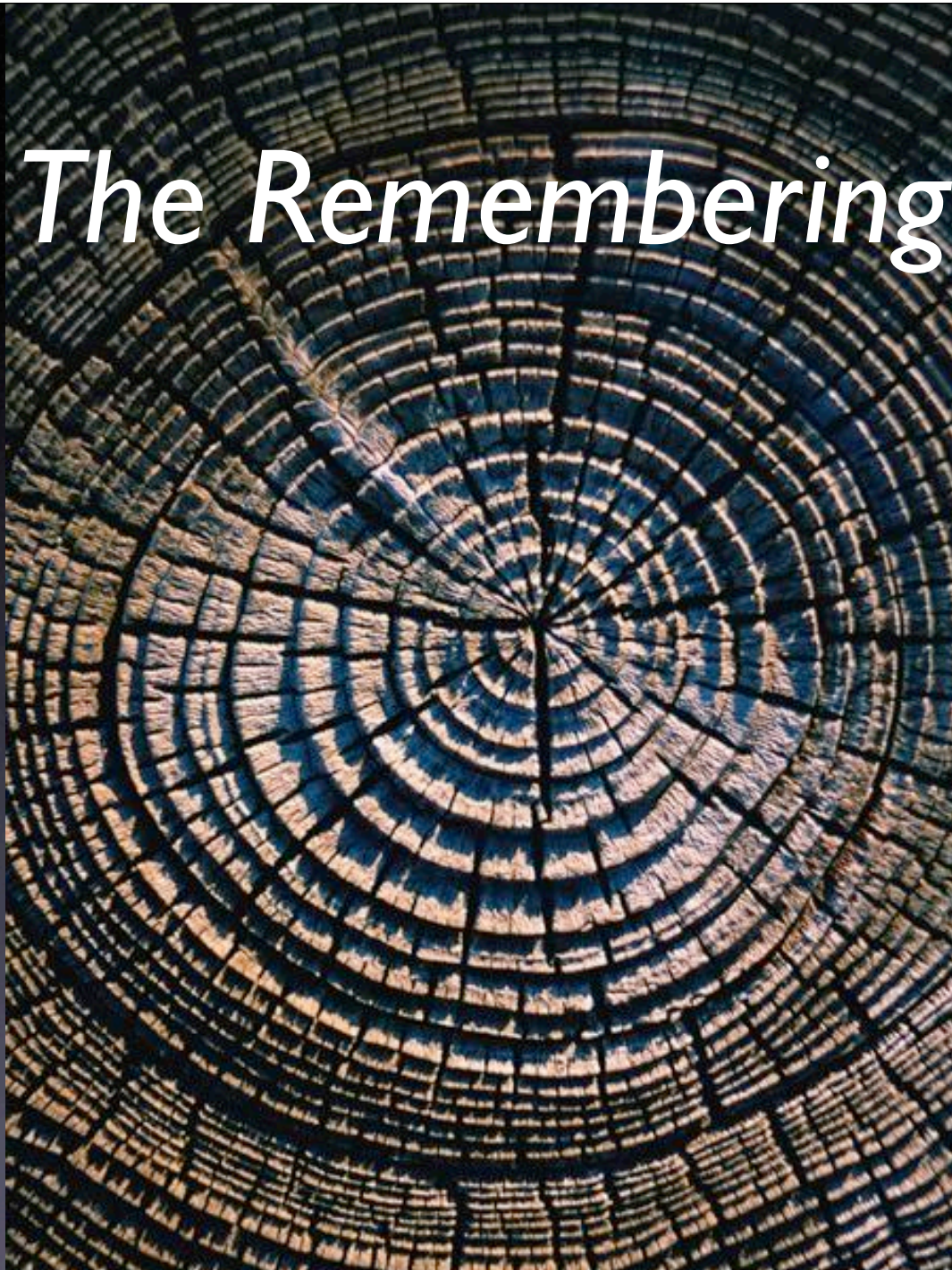


*The  
Sustaining*



# *The Remembering*

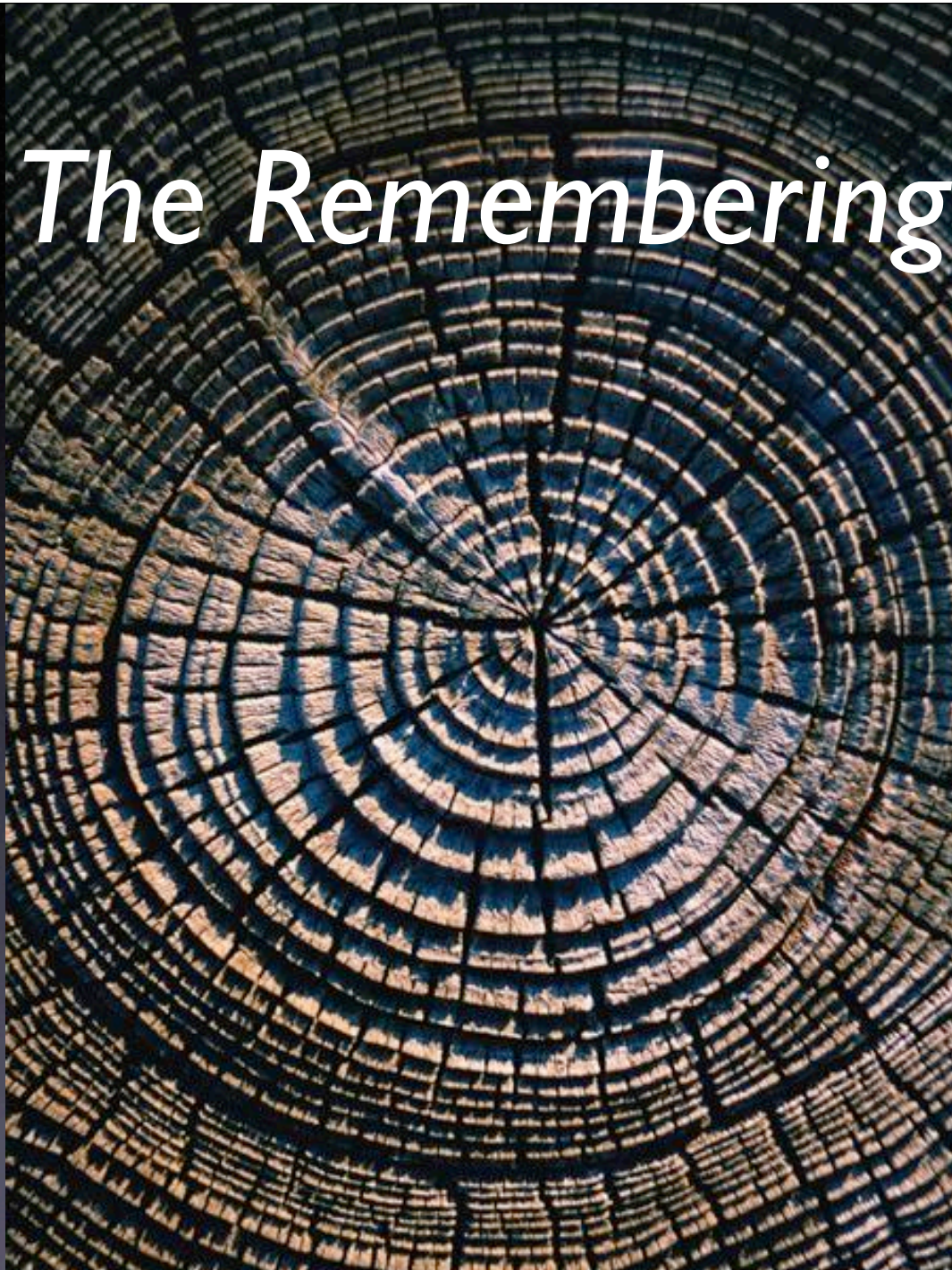
*Testimony to the passage  
of time;  
marking time;  
moments of significance;  
memorial*





# *The Remembering*

Reconnecting  
with our call  
to be  
disciples of  
Jesus Christ  
who  
transform the  
world





# The Releasing

*To lie dormant;  
to let go as sign of life;  
via negativa;  
alpha and omega;  
always ending, always beginning*






# *The Releasing*

Sending Disciples  
of Jesus Christ  
to transform  
the world



A photograph of a sunlit forest path. Sunbeams (crepuscular rays) are visible, filtering through the dense canopy of trees. The path is slightly out of focus, leading the eye towards the background. The overall mood is peaceful and hopeful.

*Closing Worship:  
A Future with Hope*

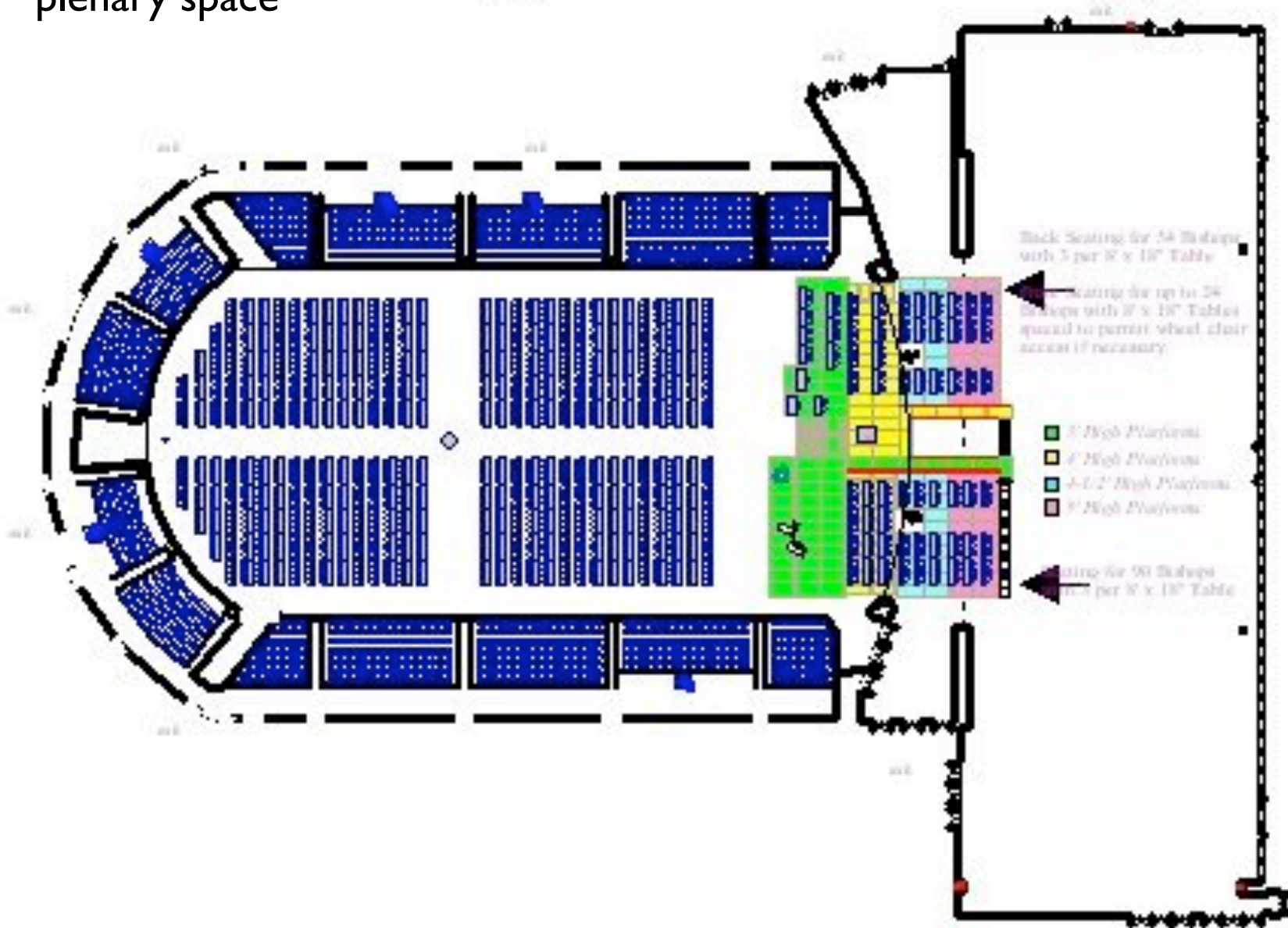




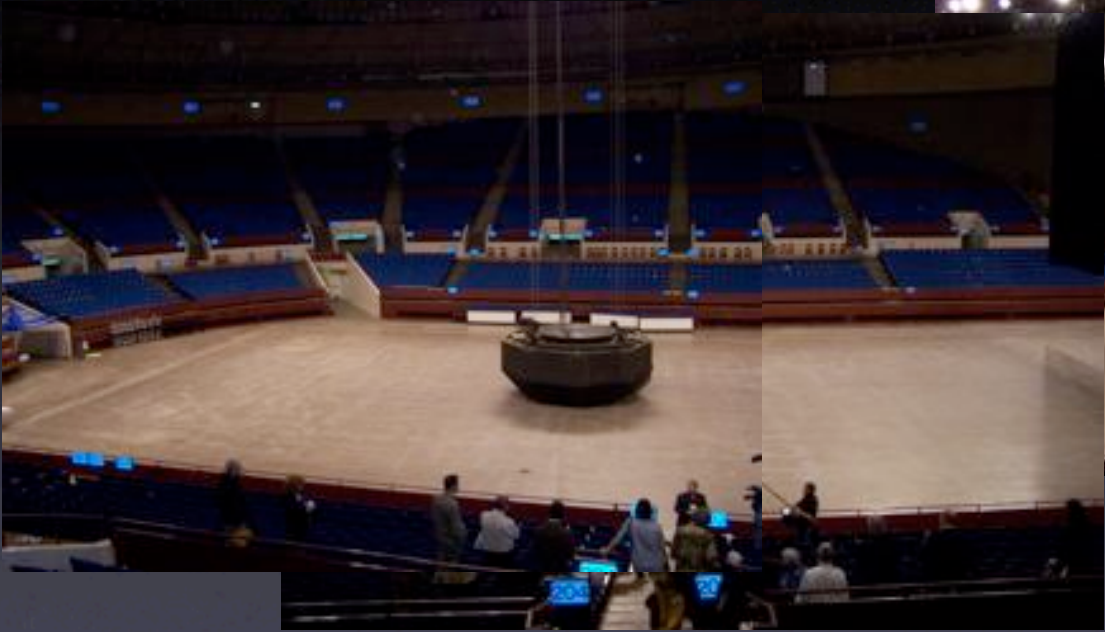
# Layout of the plenary space

Arena

Exhibit F







# *stage space*



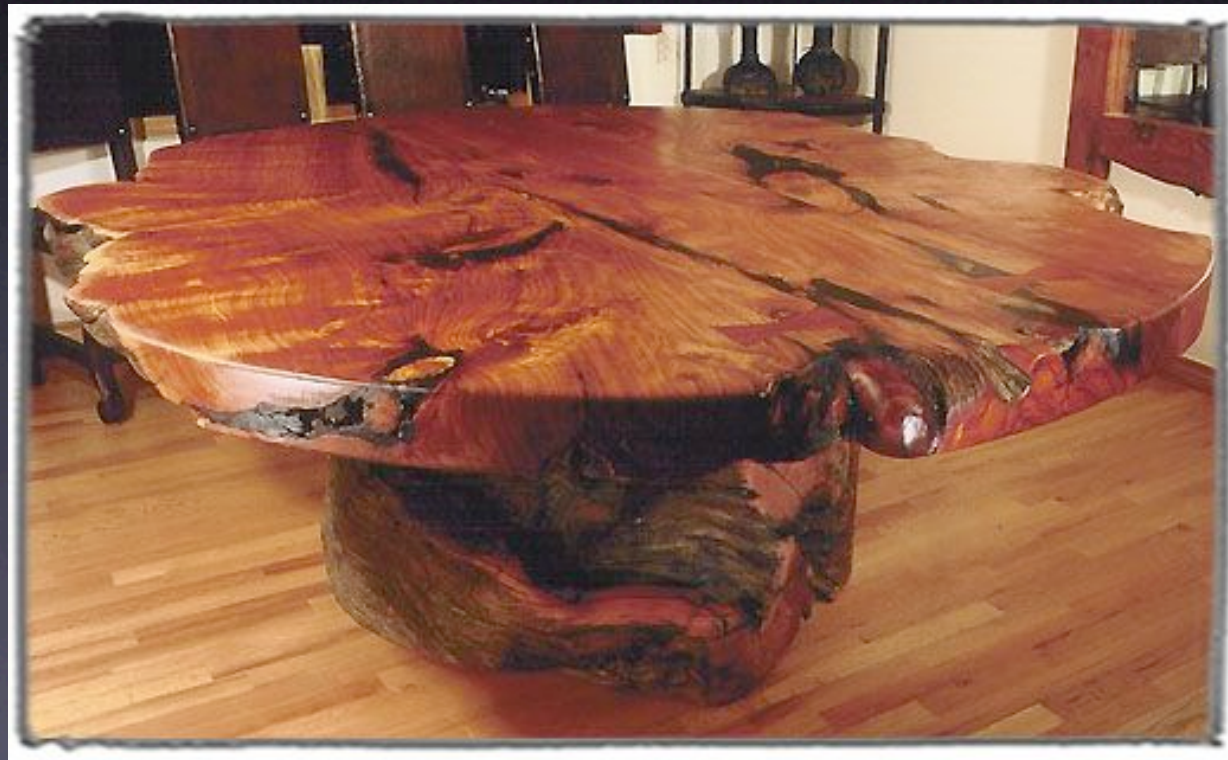








*circular table*  
*in the center of the Body*  
*[from felled trees at Gulfside Assembly]*



*altar on chancel  
with projections  
behind*

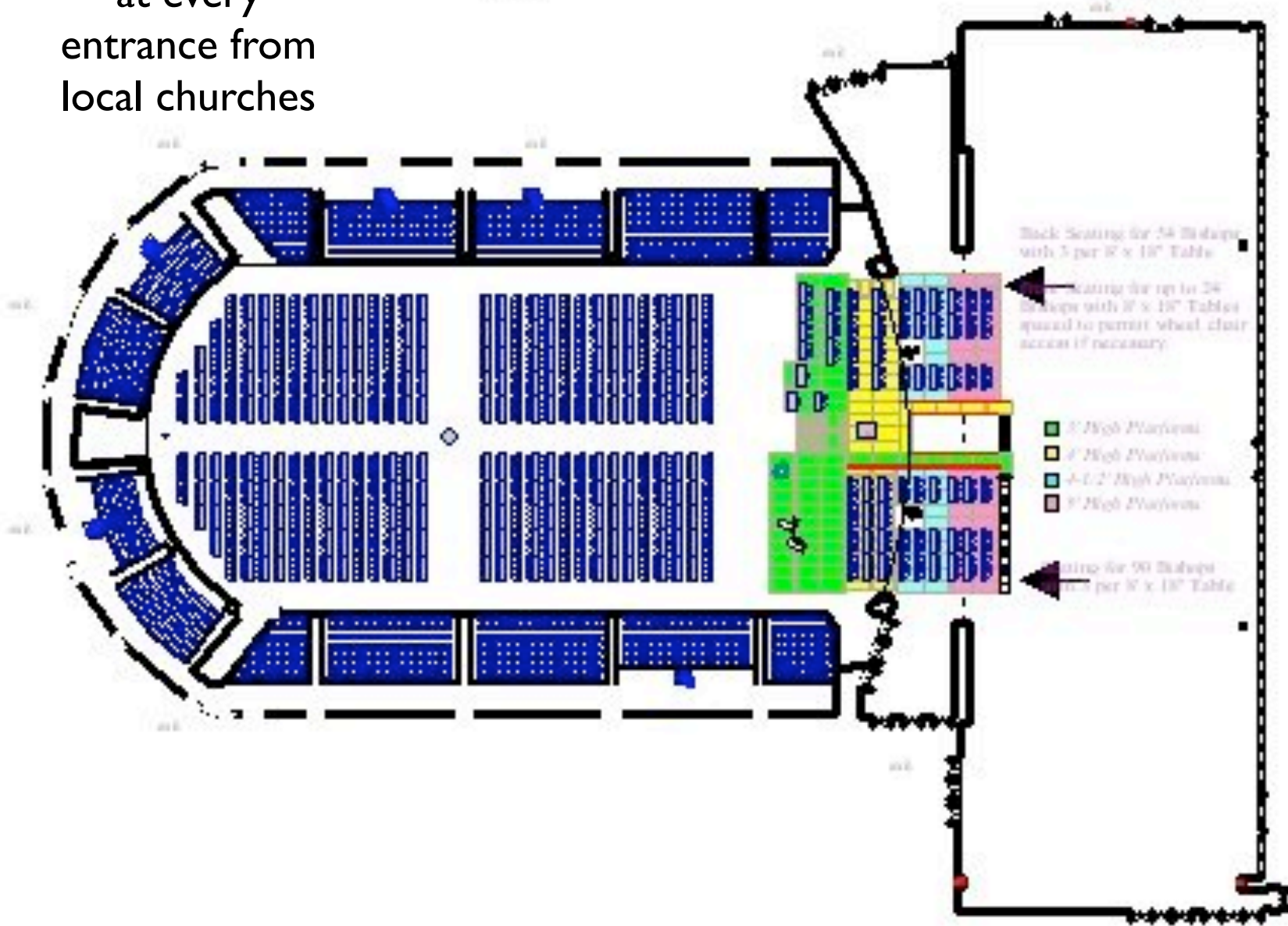




Baptismal fonts  
at every  
entrance from  
local churches

Arena

Exhibit F



*fonts from  
area churches*











# *choir seating*







